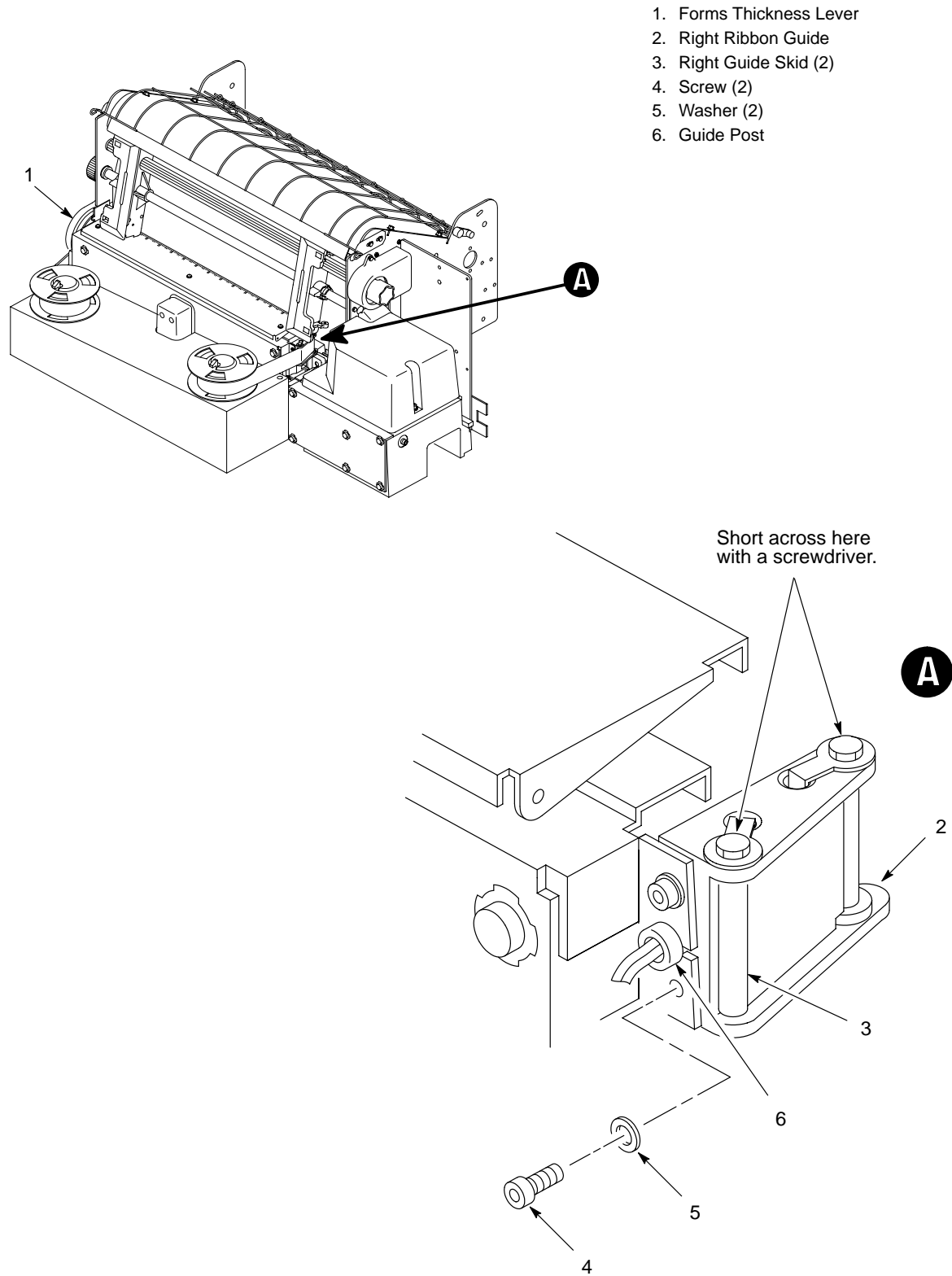


## Ribbon Tracking Check and Adjustment (Figure 5–11)

---

1. Make sure paper is loaded and that the ribbon is fully wound on one of the spools.
2. Turn the printer on and open the printer cover.
3. Set the forms thickness lever (1) to any position between “A” and “B.” Make sure no error indications appear.
4. Run a shuttle/ribbon self–test (page 4–37). Shuttle action and ribbon motion should begin.
5. On either the left or right ribbon guide (2), momentarily short across the skids (3).
6. Let the ribbon run completely out of one spool. Verify the ribbon is centered in the guide. If it is not, follow these Steps:
  - a. Loosen two screws (4) with washers (5) until the ribbon guide can be rotated about the guide post (6).
  - b. Pivot the guide until the ribbon tracks in the center.
  - c. Tighten two screws.
  - d. Verify that the ribbon is centered and winds up without interference on the ribbon spool.
7. The spool should automatically reverse. If it does not, follow these Steps:
  - a. Replace the ribbon. Rerun the test.
  - b. If there is still an error, check the cabling.
  - c. If ribbon tracking is still unsuccessful, check that the ribbon deck is installed properly and replace it if necessary. (See page 5–2.)



**Figure 5-11. Ribbon Tracking Check and Adjustment**