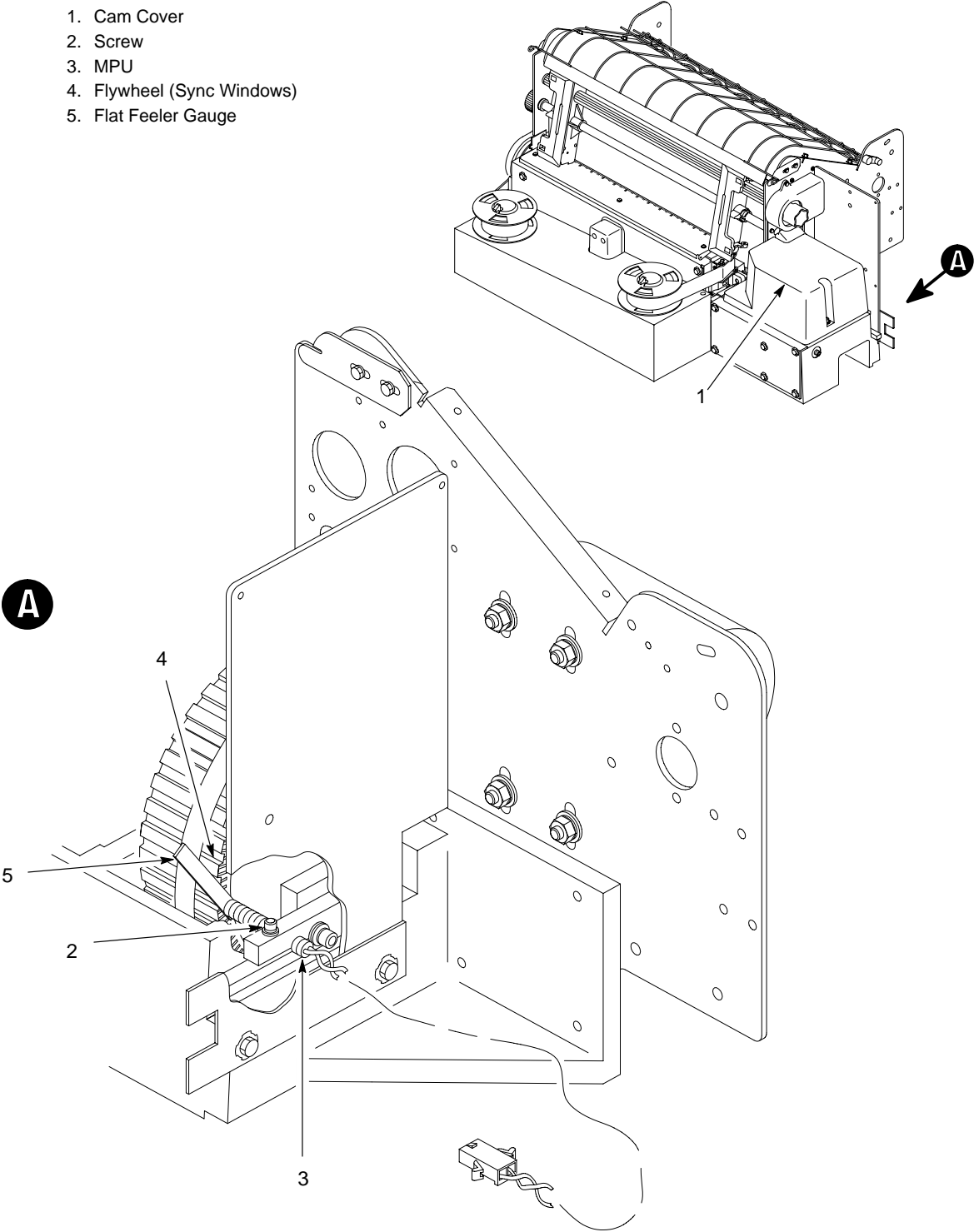


## Magnetic Pickup Gap (Figure 5-5)

---

**NOTE:** Unless otherwise directed, do the MPU phasing adjustment (page 5-14) immediately after this procedure.

1. Make sure the flywheel axle is against the rear roll pin.
2. Loosen the two captive screws and remove the cam cover (1).
3. Loosen the clamping screw (2) enough to allow the MPU (3) to be rotated.
4. Set the gap between the MPU and the flywheel (4) using a flat feeler gauge (5):
  - a. If a blue mark is on the flywheel, use a 0.002 inch feeler gauge and set the gap in line with the blue mark.
  - b. If the flywheel does not have a blue mark, use a 0.008 inch feeler gauge.
5. Tighten the clamping screw (2). Verify that the MPU does not rotate.
6. Adjust the MPU phasing (page 5-14).



**Figure 5-5. Magnetic Pickup Gap Adjustment**

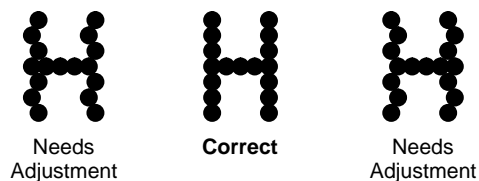
## Magnetic Pickup Phasing Adjustment (Figure 5-6)

---

Unless otherwise directed, adjust the MPU gap (page 5-12) before doing this procedure.

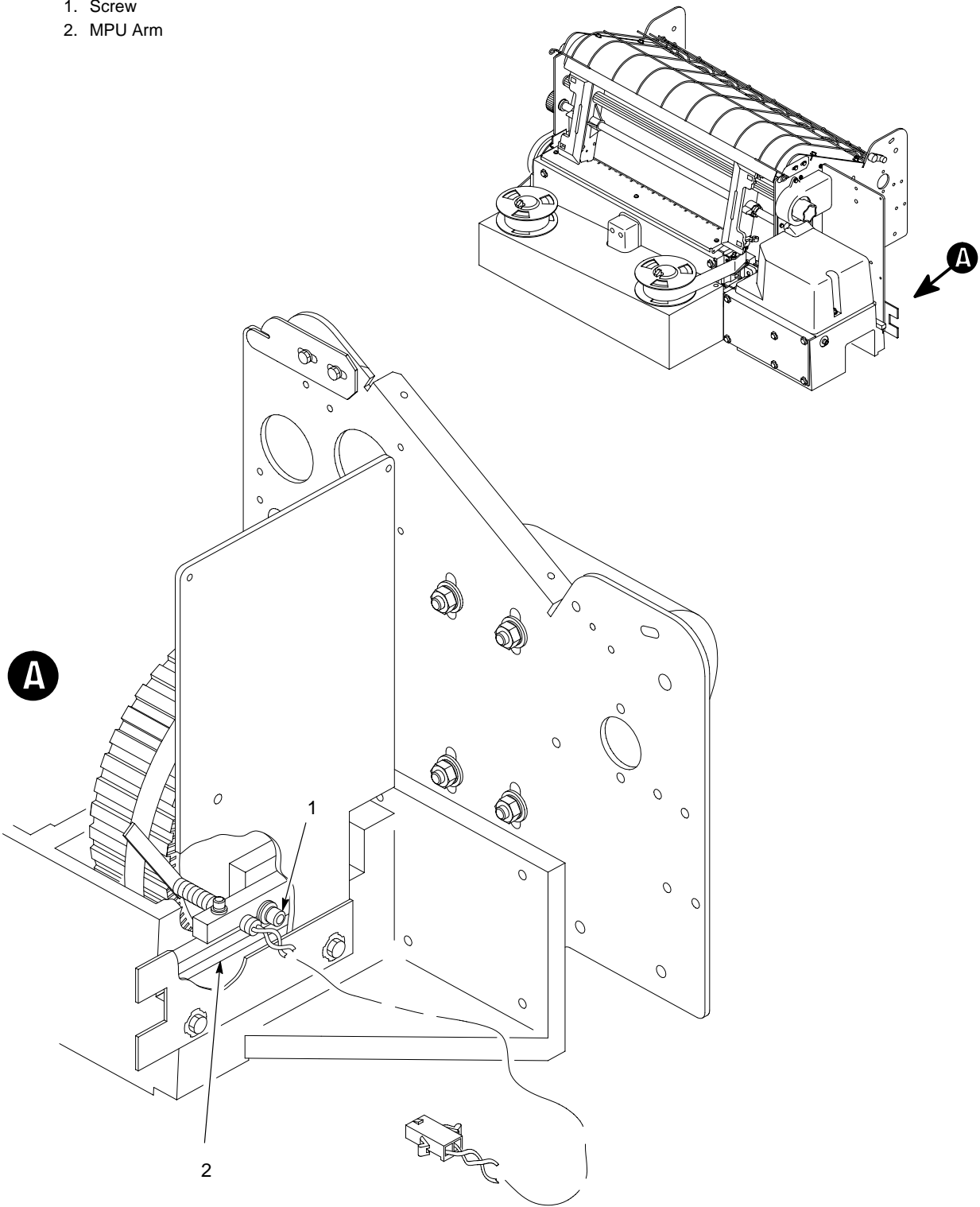
Control panel switch designations and configuration menu arrangements vary according to printer model. Refer to the *Setup Guide* for the model you are servicing for the menu structure and switches used to access the Phase Adjustment menu. The basic procedure is outlined below.

1. Open the printer cover.
2. Loosen the screw (1) until the MPU arm (2) can be pivoted, but only with some effort. Push the MPU arm (2) all the way down.
3. Load full width (132 column) paper and ribbon.
4. Turn the printer on.
5. Take the printer off-line.
6. Unlock the ENTER switch. (Refer to the *Setup Guide*.)
7. Using the directional switches on the control panel, access the “Phase Adjustment” menu. (Refer to the *Setup Guide*.)
8. Press ENTER. “Phase Adjustment” and the current phasing index number display. The printer begins printing all Hs, each line preceded by the phasing index number.
9. Press the directional switches to increase or decrease the phasing index until the pattern of Hs appears as shown below:



10. When the print pattern is acceptable, press ENTER. Printing stops, and the current phase index value is entered into nonvolatile memory.
11. Exit the configuration menus. (Refer to the *Setup Guide*.)
12. Lock the ENTER switch. (Refer to the *Setup Guide*.)
13. Close the printer cover and place the printer on-line.

- 1. Screw
- 2. MPU Arm



**Figure 5-6. Magnetic Pickup Phasing Adjustment**