

Tractor (L/R)

Removal

1. Prepare the printer for maintenance (page 128).
2. Remove the support shaft (page 217).
3. Remove the splined shaft (page 215).

Installation

1. Using the replacement tractors, install the support shaft (page 217).
2. Install the splined shaft (page 215).
3. Return the printer to normal operation (page 129).

Preparing The Printer For Maintenance

WARNING Unplug the printer power cord from the printer or power outlet before you do any maintenance procedure. Failure to remove power could result in injury to you or damage to equipment. If you must apply power during maintenance, you will be instructed to do so in the maintenance procedure.

IMPORTANT Do not attempt field repairs of electronic components or assemblies. Do not de-solder any circuit board components. Replace a malfunctioning electronic assembly with an operational spare. Most electronic problems are corrected by replacing the printed circuit board assembly, sensor, or cable that causes the fault indication. The same is true of failures traced to the hammer bank: replace the entire shuttle frame assembly. It is not field repairable. Hammer spring assemblies are the only replaceable components of the shuttle frame assembly.

To prepare the printer for maintenance, do the following steps before you make any adjustments:

1. Set the printer power switch to O (off).
2. Unplug the printer power cord from the printer or AC power source.
3. Disconnect the data (signal) cable from the printer interface.
4. Open the printer cover.
5. Unload paper.
6. Remove the ribbon.
7. Read the entire maintenance procedure before you begin working on the printer.
8. Gather the necessary parts before you begin working on the printer.

Shaft, Support

Removal

1. Prepare the printer for maintenance (page 128).
2. Unlock the tractors and slide them to the far right.
3. Remove the paper supports from the splined shaft and support shaft. (See page 246, item 20.)
4. Remove the E-ring (page 246, item 17).

NOTE: Hold the tractors while removing the support shaft. Be careful not to lose the curved spring washers. (See page 246, item 5.)

5. Slide the support shaft assembly—consisting of the support shaft, two curved washers, bushing, horizontal adjustment knob, washer and screw—to the left, out of the tractors and the left side plate. (See page 246, items 1 through 5 and 15.)

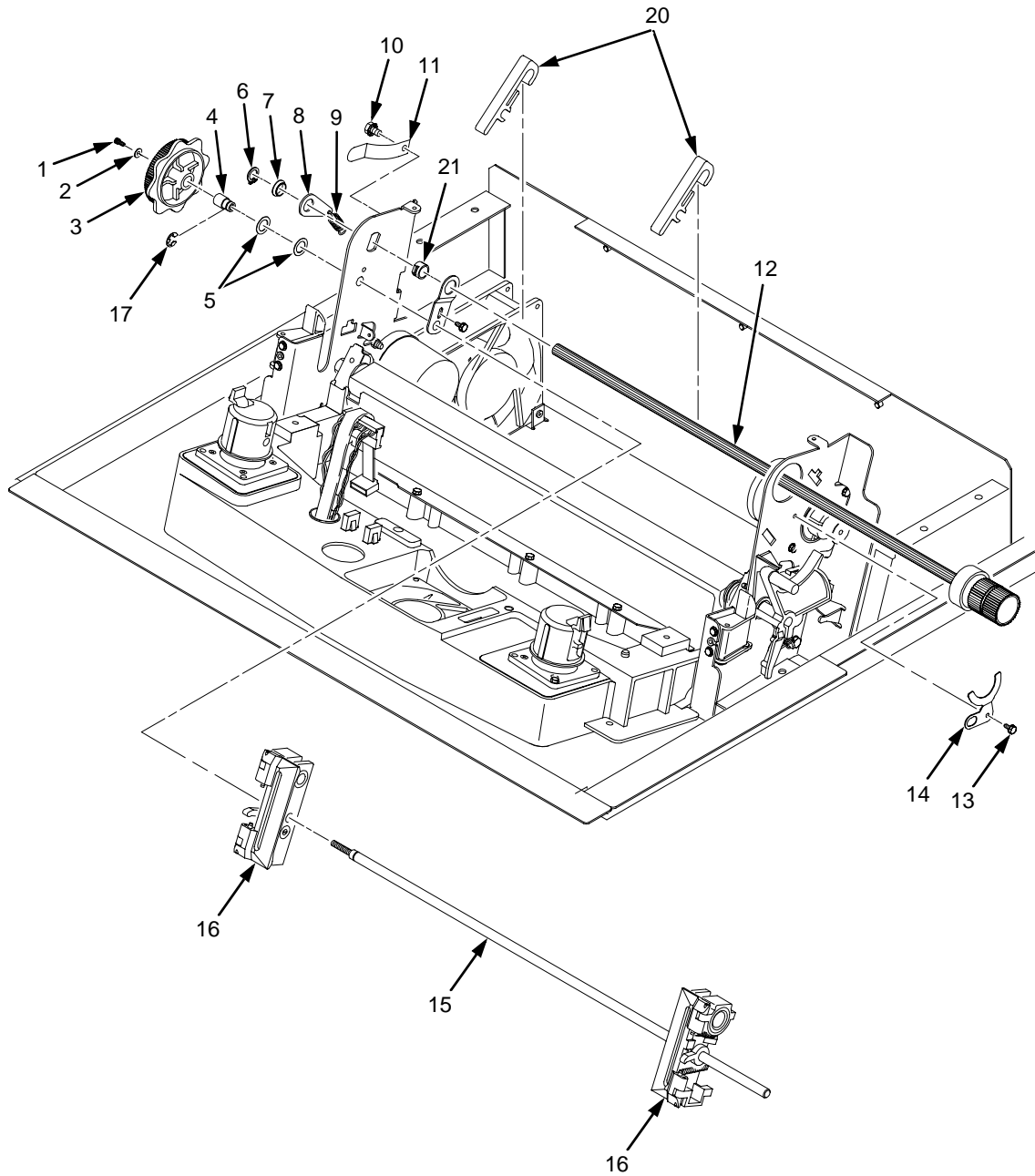
Installation

1. Slide the support shaft assembly—consisting of the support shaft, two curved washers, bushing, horizontal adjustment knob, washer, and screw—into the left side plate. (See page 246, items 1 through 5 and 15.)
2. Slide the tractors onto the support shaft.
3. Slide the support shaft assembly through the right side plate.
4. Push the horizontal adjustment knob to compress the curved washers and install the E-ring in the groove on the support shaft.
5. Install the paper supports to the splined shaft and support shaft. (See page 246, item 20.)
6. Return the printer to normal operation (page 129).

Shaft, Splined

Removal

1. Prepare the printer for maintenance (page 128).
2. Remove the paper supports from the splined shaft and support shaft. (See page 246, item 20.)
3. Remove the paper feed timing belt (page 164).
4. Remove the 1/4 inch screw securing the ground clip, and remove the clip (page 246, items 10 and 11).
5. With grip ring pliers, remove the grip ring from left side of the splined shaft (page 246, item 6).
6. Pull the bearing and spring link with the spring off the left side of the splined shaft (page 246, items 7, 8, and 9).
7. Unlock the left and right tractors and slide them to the center of the shaft.
8. Remove the 1/4 inch screw securing the bearing clamp on the right side of the splined shaft, and remove the clamp (page 246, items 13 and 14).
9. Hold the tractors so they do not fall, grasp the vertical adjustment knob, and slide the splined shaft to the right out of the side plates and the tractors.



NOTE
 Item 18 (not shown): Tractor Shaft Hardware Kit, includes items 6, 7, 8, 9, 13, 14, and 21
 Item 19 (not shown): Tractor Shaft Kit, includes items 1, 2, 3, 4, 5, 15, and 17

Figure 39. Tractor Shafts

Returning The Printer To Normal Operation

When you are finished servicing the printer, test its operation and return it to service by doing the following steps:

1. Install the ribbon.
2. Load paper.
3. Connect the data (signal) cable to the printer interface.
4. Plug the AC power cord into the printer and the power source.
5. Close the cabinet doors.
6. Set the printer power switch to | (on).
7. Test printer operation by selecting and running one of the operator print tests. (See page 111.)
8. Select the emulation. (Refer to the *User's Manual*.)
9. Set the top-of-form. (Refer to the *User's Manual*.)
10. Close the printer cover.