

Tractor (L/R)

Removal

1. Prepare the printer for maintenance (page 5-3).
2. Remove the splined shaft (page 5-68).
3. Remove the support shaft (page 5-70).
4. Remove the tractors.

Installation

1. Using the replacement tractors, install the support shaft (page 5-70).
2. Install the splined shaft (page 5-68).
3. Return the printer to normal operation (see below).

Returning the Printer to Normal Operation

1. Load paper.
2. Install the ribbon.
3. Close floor cabinet doors and the printer cover.
4. Connect the ac power cord to the power source and the printer.
5. Set the power switch to 1 (on).
6. Test printer operation by selecting and running one of the diagnostic self-tests (page 3-27).
7. Select the desired emulation. (Refer to the *User's Manual*.)

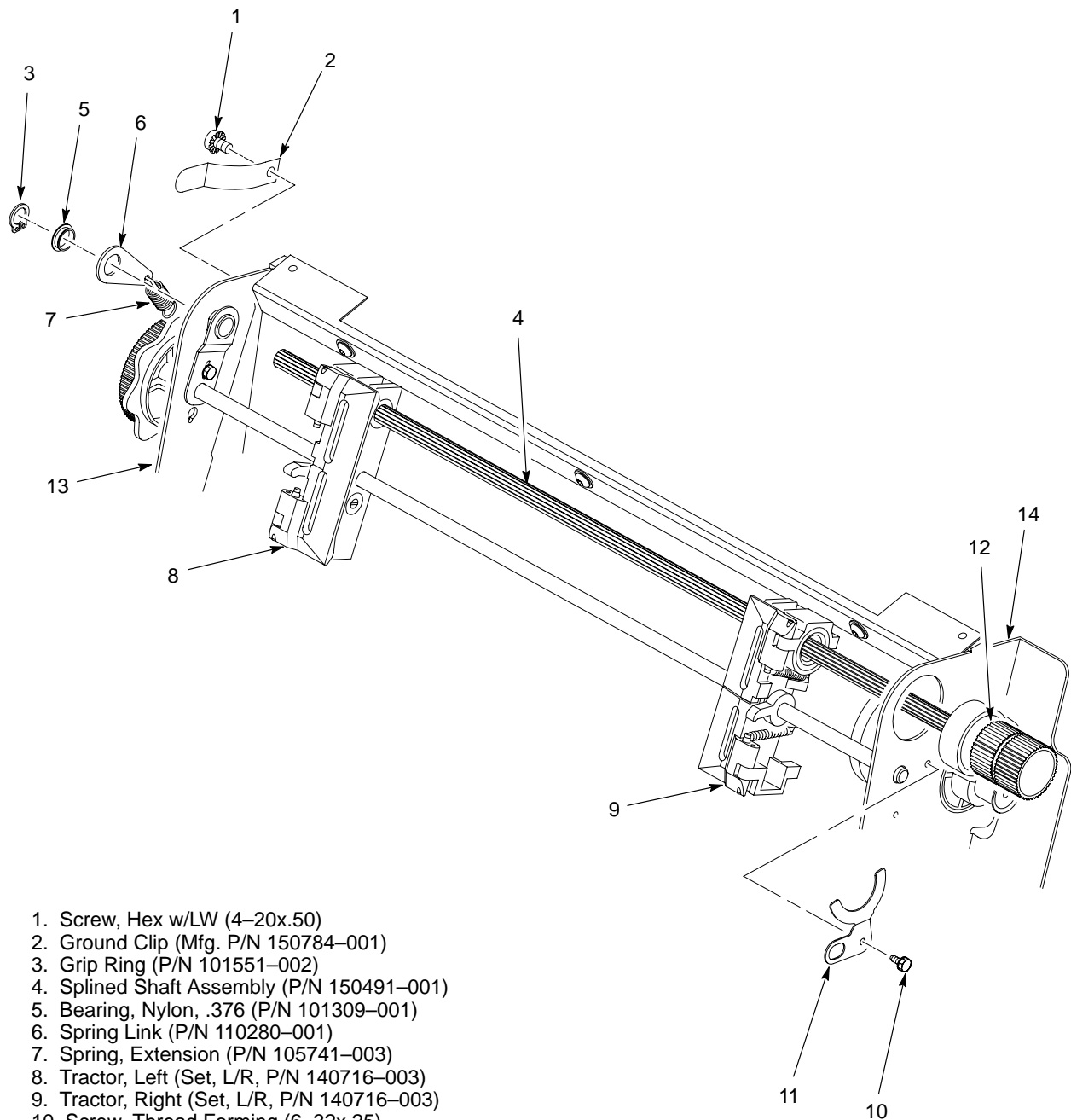
Shaft, Splined (Figure 5–29)

Removal

1. Prepare the printer for maintenance (page 5–3).
2. Open the printer cover.
3. Remove the paper feed timing belt (page 5–4).
4. Remove the screw (1) and ground clip (2).
5. With grip ring pliers, remove the grip ring (3) from the splined shaft (4).
6. Pull the bearing (5) and spring link (6) with the spring (7) off the splined shaft (4).
7. Unlock the left and right tractors (8 and 9) and slide them to the center.
8. Remove the screw (10) and bearing clamp (11).
9. Grasping the vertical adjustment knob (12), slide the splined shaft (4) out of the left and right side plates (13 and 14) and the tractors (8 and 9).

Installation

1. Open the doors on the left and right tractors (8 and 9). Position the tractor belts so the alignment marks are at the top on both tractors.
2. Grasp the vertical adjustment knob (12) and slide the splined shaft (4) through the right side plate (14), tractors (8 and 9), and the left side plate (13). Make sure the same spline passes the marked groove on each tractor.
3. Install the bearing clamp (11) and screw (10).
4. Apply a thin film of M–3 grease to the bearing (5).
5. Slide the spring link (6) and bearing (5) onto the splined shaft (4).
6. Attach the spring (7) to the left side plate (13) and the spring link (6).
7. Install the grip ring (3) on the splined shaft (4) with 0.010 inches of clearance between the grip ring and the nylon bearing (5).
8. Install the ground clip (2) and screw (1).
9. Install the paper feed timing belt (page 5–4).
10. Set the paper feed timing belt tension (page 4–2).
11. Adjust splined shaft skew (page 4–20.)
12. Return the printer to normal operation (page 5–86).



1. Screw, Hex w/LW (4-20x.50)
2. Ground Clip (Mfg. P/N 150784-001)
3. Grip Ring (P/N 101551-002)
4. Splined Shaft Assembly (P/N 150491-001)
5. Bearing, Nylon, .376 (P/N 101309-001)
6. Spring Link (P/N 110280-001)
7. Spring, Extension (P/N 105741-003)
8. Tractor, Left (Set, L/R, P/N 140716-003)
9. Tractor, Right (Set, L/R, P/N 140716-003)
10. Screw, Thread Forming (6-32x.25)
11. Bearing Clamp (P/N 110281-001)
12. Vertical Adjustment Knob (Splined Shaft Pulley) (P/N 150289-001)
13. Left Side Plate (P/N 150771-001)
14. Right Side Plate (P/N 150772-001)

Figure 5-29 . Shaft, Splined, Removal/Installation

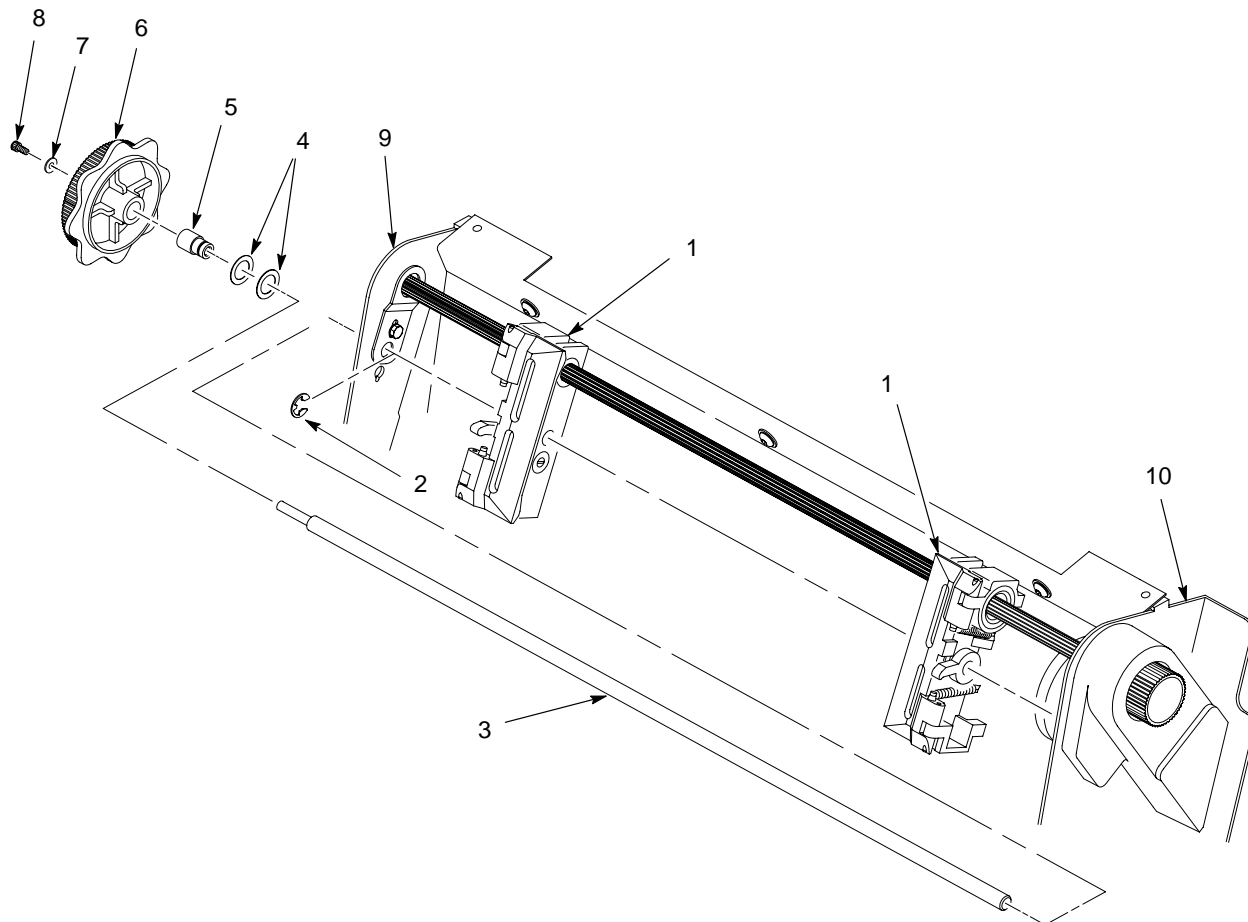
Shaft, Support (Figure 5–30)

Removal

1. Prepare the printer for maintenance (page 5–3).
2. Open the printer cover.
3. Unlock the tractors (1) and slide them to the far right.
4. Remove the E ring (2).
5. Slide the support shaft assembly — consisting of the support shaft (3), two curved washers (4), bushing (5), horizontal adjustment knob (6), washer (7) and screw (8) — to the left, out of the tractors (1) and the left side plate (9).

Installation

1. Slide the support shaft assembly — consisting of the support shaft (3), two curved washers (4), bushing (5), horizontal adjustment knob (6), washer (7), and screw (8) — into the left side plate (9).
2. Slide the tractors (1) onto the support shaft (3).
3. Slide the support shaft assembly through the right side plate (10).
4. While pushing on the knob to compress the curved washers, install the E ring (2) in the groove on the bushing (5).
5. Return the printer to normal operation (page 5–86).



- 1. Tractor (2) (Set, L/R, P/N 140716-003)
- 2. E Ring (P/N 105678-001)
- 3. Support Shaft (P/N 111685-001)
- 4. Curved Washer (2) (P/N 101552-004)
- 5. Bushing (P/N 111684-001)
- 6. Horizontal Adjustment Knob (P/N 111822-001)
- 7. Washer (Flat #4)
- 8. Screw (Skt cap, 4-40x.25)
- 9. Left Side Plate (P/N 150771-001)
- 10. Right Side Plate (P/N 150772-001)

Figure 5-30 . Shaft, Support, Removal/Installation