

## Platen Gap Adjustment (Figure 4–7 )

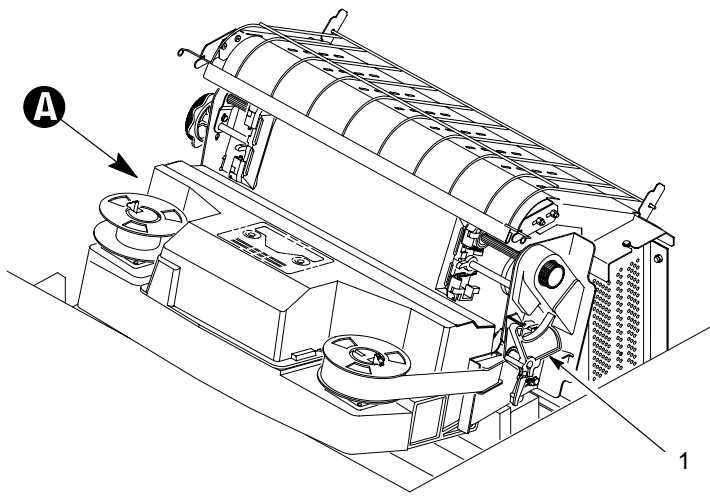
---

1. Prepare the printer for maintenance (page 4–2).
2. Open the printer cover.
3. Remove the shuttle cover assembly (page 5–24).
4. Remove the ribbon.
5. Loosen the platen open belt (page 4–4, steps 3. and 4.).
6. Raise the forms thickness lever (1) to the fully open position.

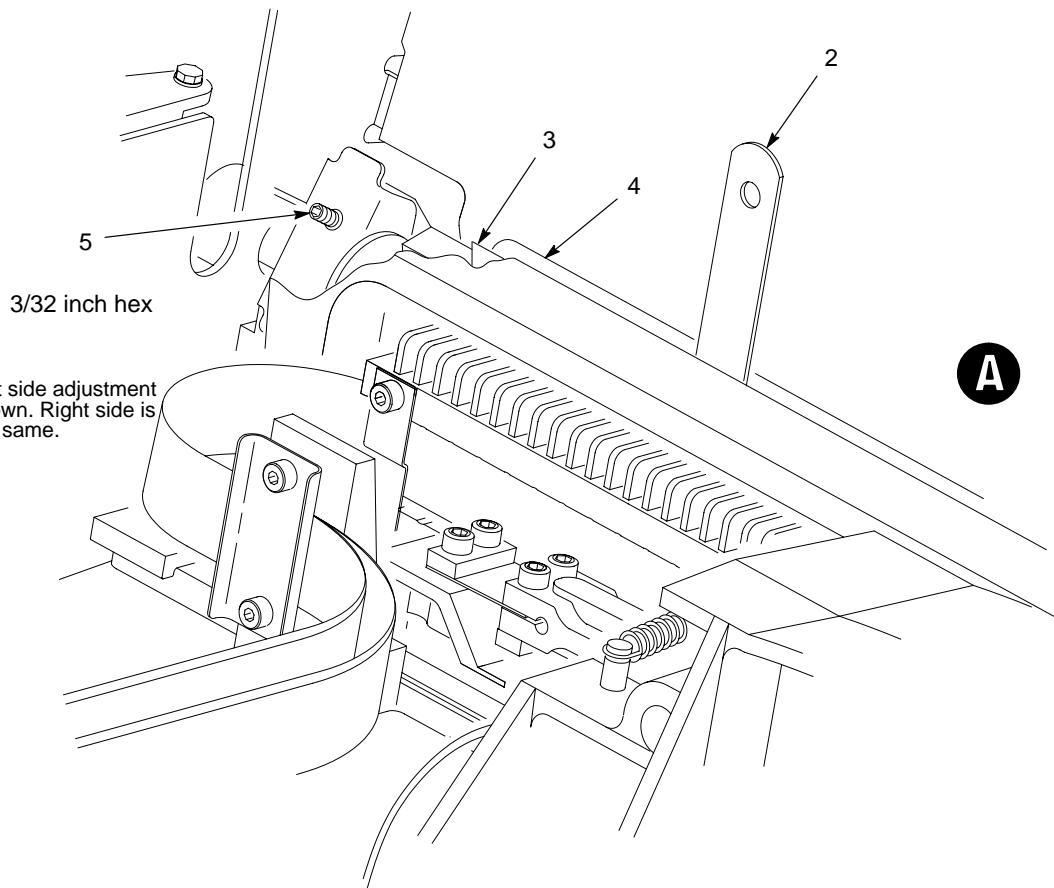
### CAUTION

**Do not force the platen against the feeler gauge. Damage to the printer will result.**

7. Insert a 0.010 inch flat feeler gauge (2) straight down between the hammer bank cover plate (3) and ribbon mask (4), within four hammer positions of the left end of the hammer bank.
8. Gently close the forms thickness lever (1). As the platen is closing, gently slide the feeler gauge up and down, keeping it between the hammer tip and ribbon mask. If the feel is too tight when the platen is being closed, adjust the set screw (5) at the end of the platen counterclockwise. If the feel is too loose, adjust the set screw clockwise. With the forms thickness lever closed all the way, the feeler gauge should contact both the tips and the ribbon mask and move with light friction. Shift the gauge slightly to verify.
9. Repeat steps 6. through 8. at the right end of the hammer bank.
10. After adjusting both sides, check the gap again at both ends. Readjust if necessary.
11. When the platen gap is correct at both ends of the platen, adjust the platen open belt (page 4–4).
12. Install the shuttle cover assembly (page 5–24).
13. Return the printer to normal operation (page 4–22).



- 1. Forms Thickness Lever
- 2. Feeler Gauge (0.010 inch)
- 3. Hammer Bank Cover Plate
- 4. Ribbon Mask
- 5. Set Screw, 3/32 inch hex (2)



**NOTE:** Left side adjustment shown. Right side is the same.

**Figure 4-7 . Platen Gap Adjustment**

## Belt, Platen Open, Adjustment (Figure 4-2)

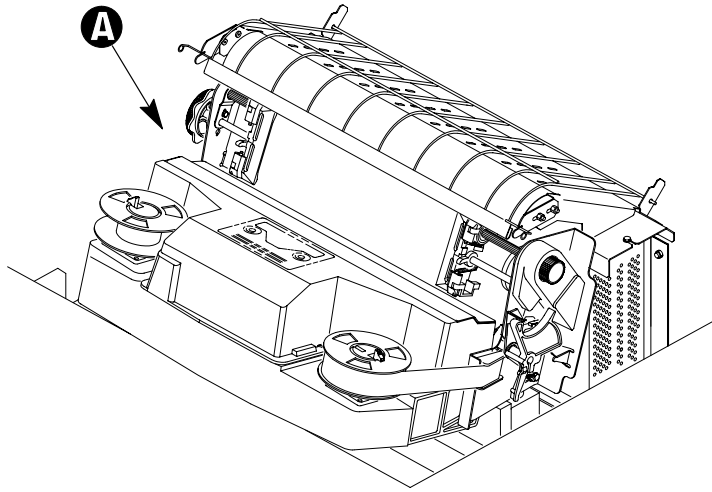
---

1. Prepare the printer for maintenance (page 4-2).
2. Open the printer cover.
3. Remove the platen open belt cover (1) by squeezing the top and bottom to release the plastic tabs from the slots in the side plate.
4. Loosen the motor mount screws (2).
5. Close the forms thickness lever all the way.

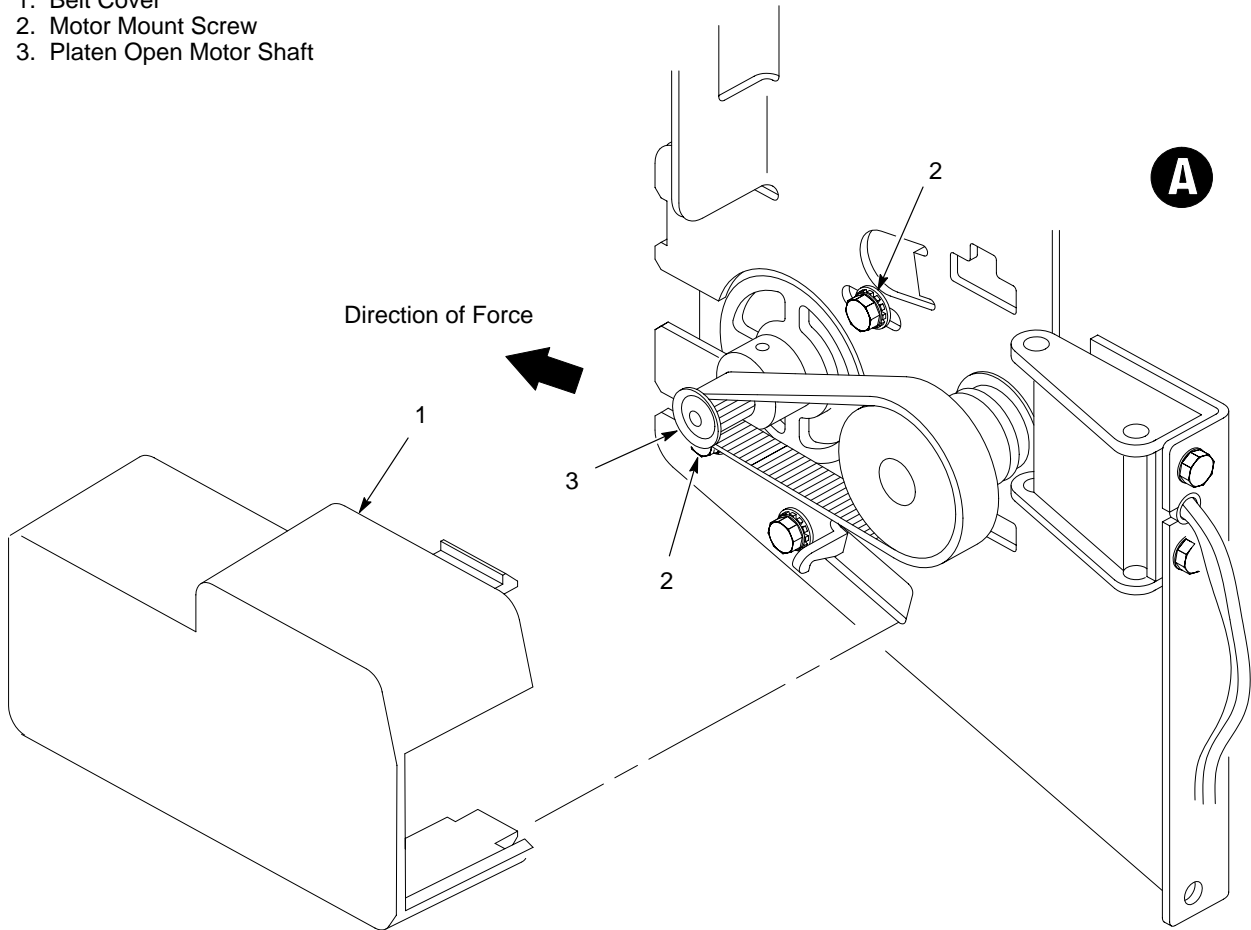
### CAUTION

**Too much tension on the platen open belt can cause the platen gap to change, which can lead to premature wear of the platen, damaged hammer tips, and poor print quality.**

6. Using a force gauge, apply  $10 \pm 1$  pounds of tension to the platen open motor shaft (3), pulling away from the large platen pulley.
7. Reduce tension to  $5 \pm 1$  pounds and torque the motor mount screws (2) to  $11 \pm 2$  inch-pounds.
8. Check the platen gap (page 4-14). Loosen the belt and readjust the gap if necessary.
9. Snap the platen open belt cover (1) into the slots in the side plate.
10. Return the printer to normal operation (page 4-22).



- 1. Belt Cover
- 2. Motor Mount Screw
- 3. Platen Open Motor Shaft



**Figure 4-2 . Platen Open Belt Adjustment**