

5–20. Ribbon Drive (Figure 5–17 or Figure 5–18)

– IMPORTANT –

Before replacing the ribbon drive assembly, read the P-Series Ribbon Deck Assembly Service Notes on page 5–39.

a. Removal

PEDESTAL MODELS: (Figure 5–17)

1. Place ribbon drive assembly in service position per paragraph 3–4c, step 4.
2. Check for labels on connectors at J1 (1), J2 (2), and J3 (3) and at ground wire (4). If not already labeled, install labels during removal (step 3 below).
3. Remove connectors at J1 (1), J2 (2), and J3 (3). Remove ground wire (4).
4. Cut tie wraps as necessary and slip connectors (1,2,3) and ground wire (4) out through grommet (5).
5. Separate ribbon drive (6) from printer (7).

FLOOR CABINET (XQ) MODELS: (Figure 5–18)

1. Remove ribbon control PCBA per paragraph 5–21.
2. Remove nut (6), star washer (7), and washer (8).
3. Separate terminal lug (9) from threaded stud (10).
4. Remove two socket head screws (13) that secure ribbon drive assembly (11) to hammer bank bearing blocks.
5. Separate ribbon drive assembly (11) from printer (12).

b. Installation

PEDESTAL MODELS: (Figure 5–17)

1. Place ribbon drive (6) on printer (7) in service position.
2. Feed connectors (1, 2, 3) and ground wire (4) through grommet (5). Retie wires as necessary.
3. Install ground wire (4) and connectors at J1 (1), J2 (2), and J3 (3).
4. Return ribbon drive to operating position per paragraph 3–4c, steps 9 and 10.

FLOOR CABINET (XQ) MODELS: (Figure 5–18)

1. Install ribbon drive assembly (11) on printer (12).
2. Install two socket head screws (13) that secure ribbon drive assembly (11) to hammer bank bearing blocks.
3. Install terminal lug (9) on threaded stud (10).
4. Install washer (8), star washer (7), and nut (6).
5. Install ribbon control PCBA per paragraph 5–21.

P-Series Ribbon Deck Assembly Service Notes

Printer		Ribbon Deck	Ribbon Control Card
P300	P600	105377-901	102140-901 w/hole
P300XQ	P600XQ	107708-901	(Old) 105468-901 (New) 108726-901 *
* Boards backwards compatible with 108726-901:			105468-901 107842-901
<p>P/N 108120-001 is the angle bracket for all new cards.</p> <p>The 102140-901 ribbon control PCBA is identified by a built-in triac. This triac is used to switch AC current to the shuttle motor, and is used on all pedestal model P300 and P600 machines. (This PCBA was also used on early P6040/6080 machines; later P6040/6080 models use a control card without a triac.) Ribbon decks and ribbon control cards must match, since both are wired differently with the newer cards.</p> <p>Floor cabinet (XQ) models do not have a triac on the ribbon control board. Earlier units (indicated above as "old") keyed pin 1 of J7 with a plastic sleeve, which keeps it from matching the new board. Simply remove the sleeve so the pin will mate to P7 of the "new" card. You may also have to reroute the cables to the control board. The plug locations are shifted on the new board, but the plug/jack numbers and functions are the same for all boards.</p>			

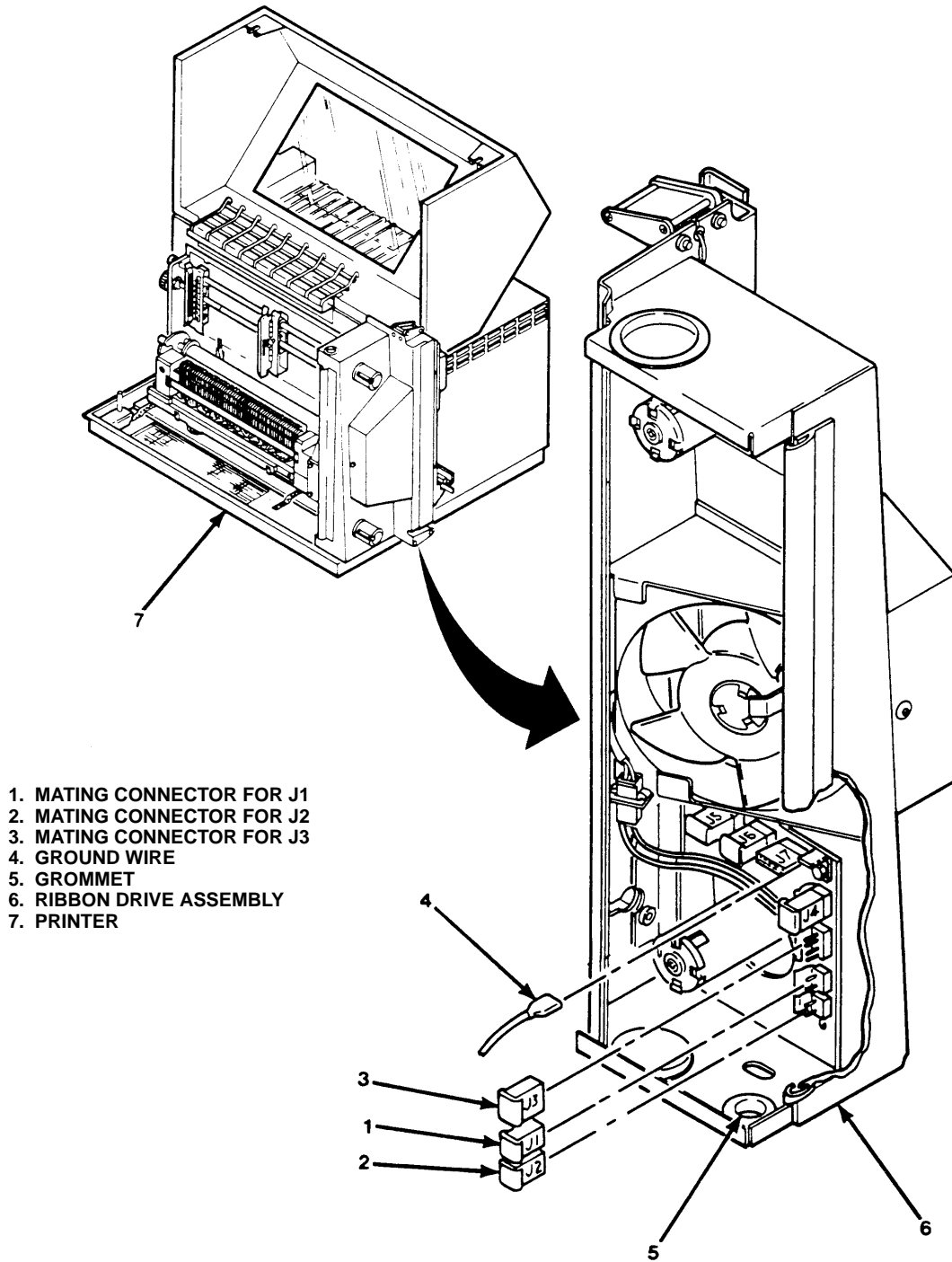


Figure 5-17. Ribbon Drive Removal/Installation, Pedestal Models

1. SCREW (6)
2. BOTTOM PLATE
3. RIBBON CONTROL PCBA
4. CONNECTOR P3
5. CONNECTOR P7
6. NUT
7. STAR WASHER
8. WASHER
9. TERMINAL LUG
10. THREADED STUD
11. RIBBON DRIVE ASSEMBLY
12. PRINTER
13. SCREW, SOCKET HEAD (2)
14. SCREW (2)

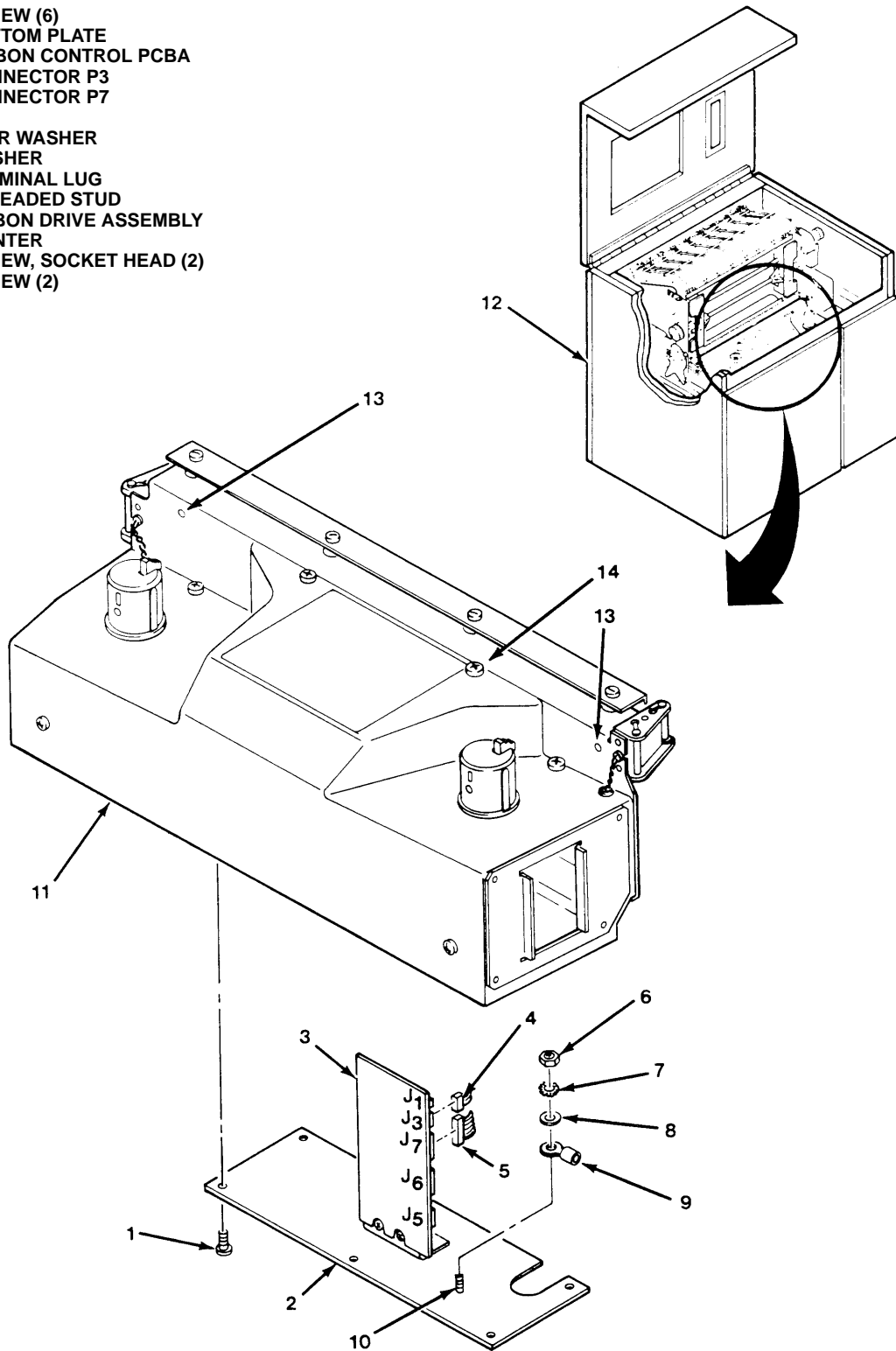


Figure 5-18. Ribbon Drive Removal/Installation, Floor Cabinet (XQ) Models