

## 5–27. Shuttle Assembly (Figure 5–22)

---

### a. Removal

---

1. Remove controller, mechanism driver, and power supply PCBAs per paragraphs 5–20a, 21a, and 22a.

*NOTE: Cut cable ties as necessary to free cables during removal.*

2. Remove shuttle cover (1).
3. Disconnect connector P21 (2) from interconnect PCBA (3).
4. Remove two screws (4) and washers (5).
5. Separate connector J12 (6) from base (7).
6. Feed connectors P21 (2) and J12 (6) around to left side of base (7).
7. Remove three hex head screws (8) and star washers (9). To gain access to one of the screws, rotate shuttle assembly to service position (see paragraph 3–4c, 2 through 4, for procedure).
8. Separate cable anchor bracket (10) from base (7).
9. Remove two springs (11).
10. Remove two screws (12). Remove pivot retainer (13). Repeat for other end of shuttle assembly (14).
11. Lift shuttle (14) out of printer while feeding connectors P21 (2) and J12 (6) out through holes in base (7).

*NOTE: Be careful that wear saddles at end of axles are not inadvertently dropped and lost during removal/installation of shuttle.*

### b. Installation

---

1. Feed connectors P21 (2) and J12 (6) through holes in base (7) and position shuttle (14) in printer.
2. At each end of shuttle assembly (14), install pivot retainer (13) and two screws (12).
3. Install two springs (11).
4. Place cable anchor bracket (10) on base (7).
5. Install three hex head screws (8) and star washers (9). To gain access to innermost screw, shuttle must be in service position.
6. Route connectors P21 (2) and J12 (6) to their respective locations in base (7).
7. Place connector J12 (6) in position on base (7).
8. Install two screws (4) and washers (5).
9. Connect connector P21 (2) to interconnect PCBA (3).

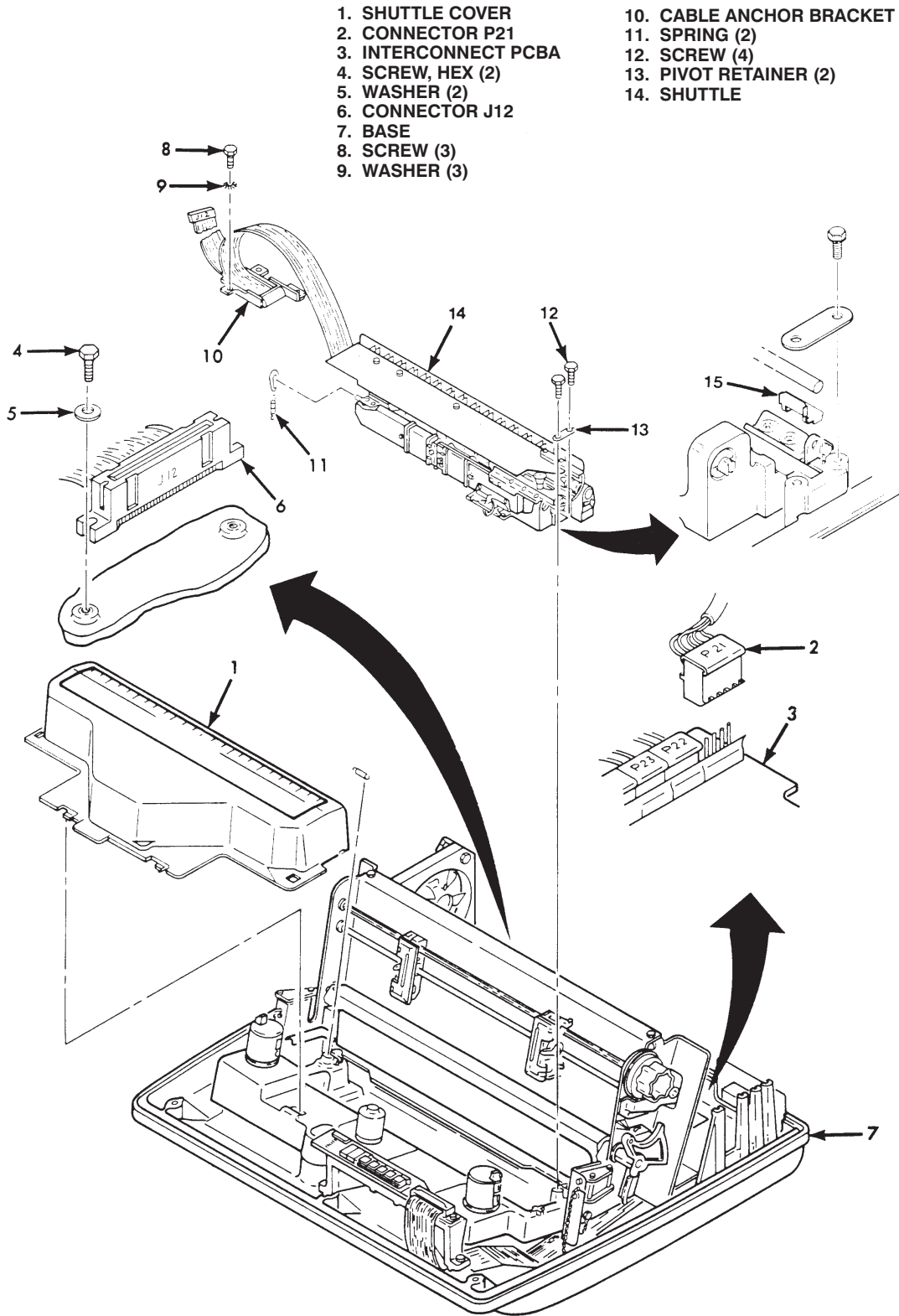


Figure 5-22. Shuttle Assembly Removal/Installation

## 5–27. Shuttle Assembly – continued

---

### b. Installation – continued

---

10. Check cable between shuttle (12) and anchor bracket (10). Make sure there are no sharp bends or creases. Verify service loop is continuous and does not contact base when shuttle oscillates. Reposition as necessary.
11. Check that shuttle assembly (12) rotates between normal and service positions and there is no slack in encoder cable underneath shuttle.
12. Install controller, mechanism driver, and power supply PCBAs per paragraphs 5–20b, 21b, and 22b.
13. Verify print quality by printing repeating test patterns. If print is not acceptable, perform hammer alignment per paragraph 5–4, bumper adjustment per paragraph 5–6, or phasing adjustment per paragraph 5–8.

## 5–28. Hammer Bank Cable Assembly (Figure 5–23)

---

### a. Removal

---

1. Remove PCBAs, shuttle cover, connector J12, and cable anchor bracket per paragraph 5–27a, 1 through 8.
2. Feed cable assembly (1) up through hole in base.
3. Remove screw (2) and terminal lug E1 (3).
4. Disconnect four slide–on terminals E2 through E5 (4 through 7).
5. Remove three cable clips (8) from cable guide (9).
6. Remove two screws (10) and star washers (11).
7. Separate linear motor guide (12) and spacers (13) from hammer bank PCBA (14).
8. Remove three hex screws (15).
9. Separate hammer bank PCBA (14) and attached cable from hammer bank (16). Note that connectors at bottom rear must be slid away from hammers to disconnect.

### b. Installation

---

1. Place hammer bank PCBA (14) on hammer bank (16). Engage connectors at bottom rear of PCBA with pins on hammers.
2. Install three hex screws (15).
3. Place linear motor guide (12) and spacers (13) on hammer bank PCBA (14).
4. Install two screws (10) and star washers (11).
5. Clip cable to cable guide (9) using three cable clips (8).

1. CABLE ASSEMBLY
2. SCREW
3. TERMINAL LUG E1
4. TERMINAL LUG E2
5. TERMINAL LUG E3
6. TERMINAL LUG E4
7. TERMINAL LUG E5
8. CABLE CLIP (3)
9. GUIDE, CABLE
10. SCREW (2)
11. WASHER, STAR (2)
12. GUIDE, LINEAR MOTOR
13. SPACER (2)
14. HAMMER BANK PCBA
15. SCREW, HEX (4)
16. HAMMER BANK

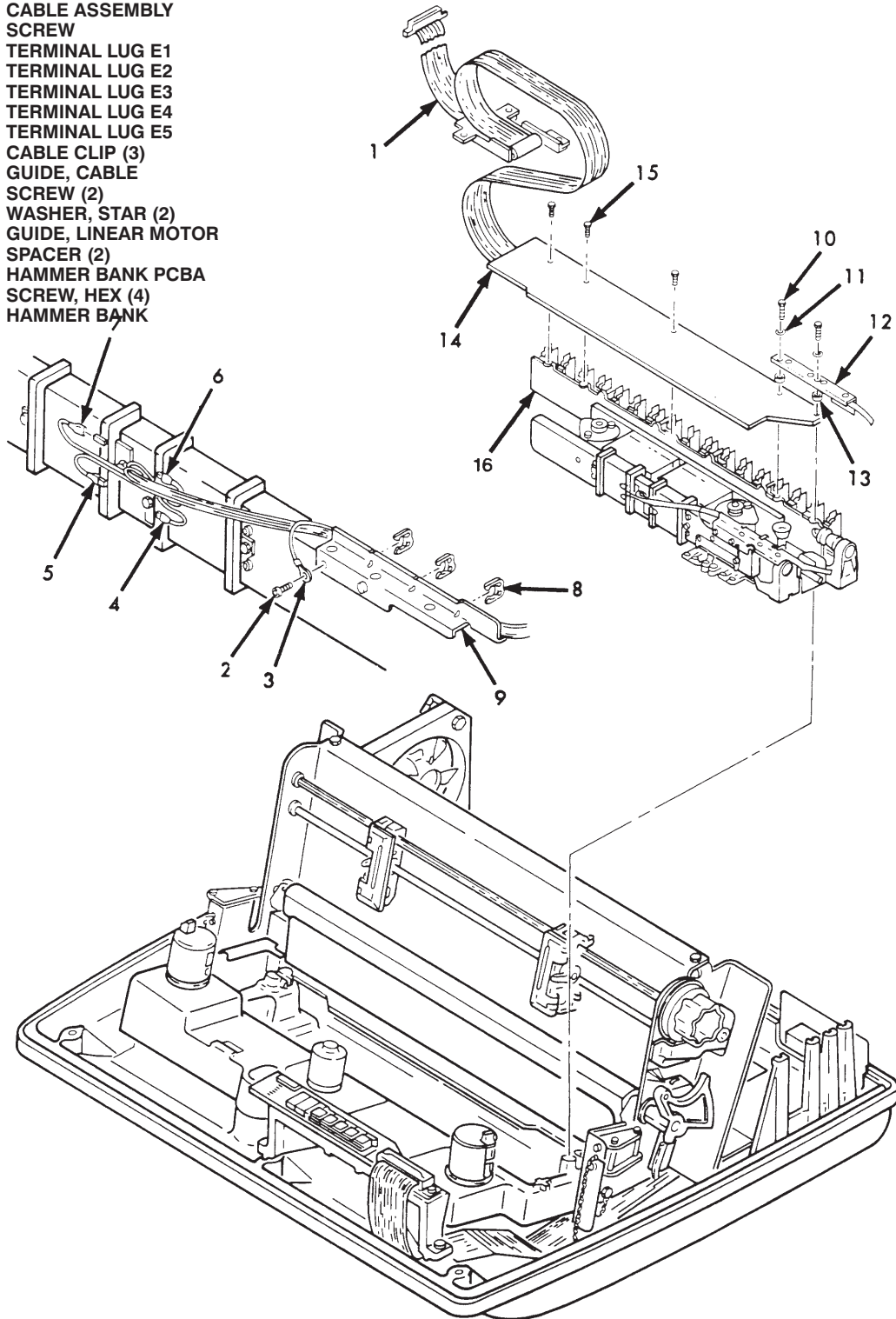


Figure 5-23. Hammer Bank Cable Assembly Removal/Installation

## **5–28. Hammer Bank Cable Assembly**–continued

---

### **b. Installation**–continued

---

6. Connect four slide on terminals E2 through E5 (4 through 7).
7. Install terminal lug (3) and screw (2).
8. Feed cable assembly (1) through hole in base.
9. Install cable anchor bracket, connector J12, shuttle cover and PCBAs per paragraph 5–27b, steps 4 through 15.